

# WIFI BRIDGE

## QUICK START GUIDE

- 1 Download & install app.



Free app for iOS and Android



- 2 Plug ARC Wi-Fi Hub into any 5V USB power source.  
A red LED will be visible.



- 3 Open app and press Sign Up.



- 4 Pair Hub to Wi-Fi network.  
(Ensure smart device is connected to the same Wi-Fi network)



> LOCATIONS

> MY HOUSE >

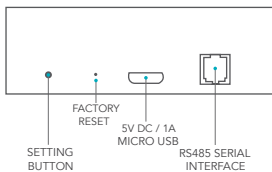
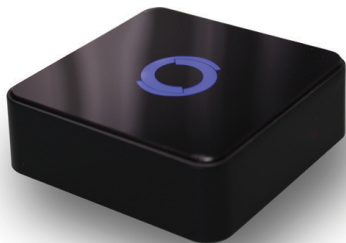
ADD NEW HUB >

SETUP WIZARD

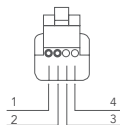
- 5 Easily add Rooms & Devices, create Scenes & Timers.



# WIFI BRIDGE QUICK START GUIDE









Data Cable: RJ9



1:	+ RS485
2:	- RS485
3:	-
4:	-

# LED INDICATION

COLOR	RESPONSE	STATUS
	Flashes Twice	Power On (Plug into 5V micro USB)
	Continuous Flashing	Hub pairing mode (Press set button for 2 seconds then release)
	Flashes Three times	Factory reset Hub data & unpair from account (Press factory reset button for 10 seconds then release)
	On	App is connected to Hub
	Continuous Flashing Blue to Purple	Hub is connected to Wi-fi router (No cloud connection)
	1 Flash every 5 seconds	Hub is connected to cloud server
	Continuous Flashing	Not Paired (Connection to Wi-Fi router lost)
	Flashing	Update firmware (Cloud server will update automatically)

## Regulatory Compliance

The manufacturer declares this equipment is in compliance with the essential requirements and other relevant provisions of the following directives:

2006/95/EC	The Low Voltage Directive
89/336/EEC	The Electromagnetic Compatibility Directive
1999/5/EC	R&TT EC Directive

## Statement Regarding FCC Compliance

This device complies with Part 15 of the FCC Rules. Operation is subject to the following two conditions:

- (1) This device may not cause harmful interference, and
- (2) This device must accept any interference received, including interference that may cause undesired operation.

Note: This equipment has been tested and found to comply with the limits for a Class B digital device, pursuant to Part 15 of the FCC Rules. These limits are designed to provide reasonable protection against harmful interference in a residential installation. This equipment generates, uses and can radiate radio frequency energy and, if not installed and used in accordance with the instructions, may cause harmful interference to radio communications. However, there is no guarantee that interference will not occur in a particular installation. If this equipment does cause harmful interference to radio or television reception, which can be determined by turning the equipment off and on, the user is encouraged to try to correct the interference by one or more of the following measures:

- Reorient or relocate the receiving antenna.
- Increase the separation between the equipment and receiver.
- Connect the equipment into an outlet on a circuit different from that to which the receiver is connected.
- Consult the dealer or an experienced radio/TV technician for help.

Any changes or modifications not expressly approved by the party responsible for compliance could void the user's authority to operate the equipment.



Do not dispose of in general waste.

 Please recycle batteries and damaged electrical products appropriately.

