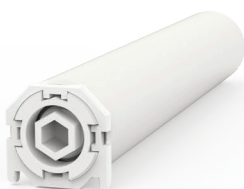
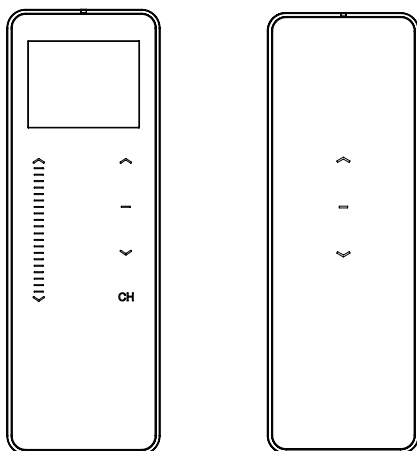


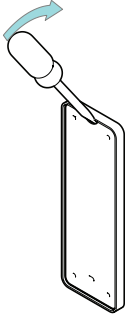
MOTORIZED LIFT FOR HONEYCOMB SHADES PROGRAMMING GUIDE



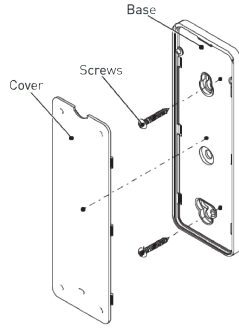
REMOTE CONTROL BASICS

Wall Mount Holder

Remove cover from base by prying with flat head screwdriver.

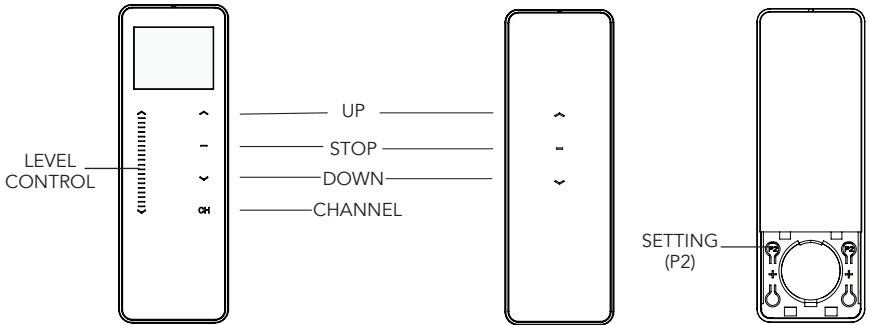


Use supplied fasteners and anchors to attach the base to wall.

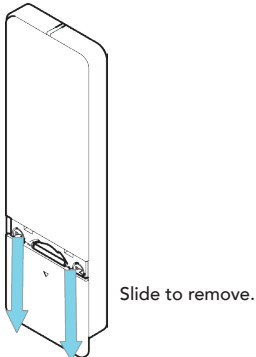


Replace cover by pressing snap latches into place.

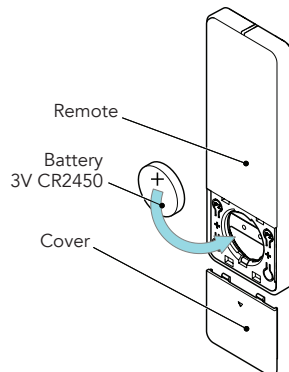
Remote Control Functions & Battery Replacement



Remove cover from remote press gently in and down to disengage cover.



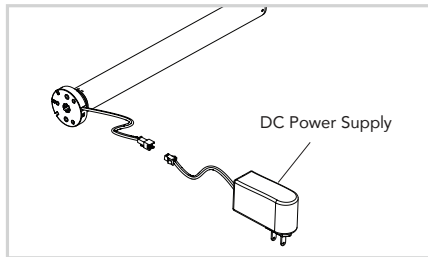
Install battery with positive (+) side facing up.



Power Options

DC motors are powered from a 12V DC power source. AA Battery wands, re-chargeable battery packs and A/C power supplies are available, with a variety of quick connect extension cords. For centralized installations, power supply range can be extended with 18/2 wire.

- During operation, if voltage drops to less than 10V, the motor will beep 10 times to indicate a power supply issue.
- Motor will stop running when the voltage is lower than 7V and it will resume again when the voltage is greater than 7.5V.



Ensure cable is kept clear of fabric.

Ensure antenna is kept straight and away from metal objects.

INITIAL SET-UP

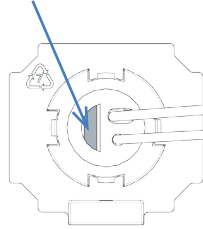
Pair Motor with controller

Select channel on controller.

(Disregard if using single channel controller)



Hold **P1** button on motor



Hold **STOP** on controller



IMPORTANT

Motor Response

Motor Response

Consult user manual for your controller for information on selecting channel.



JOG X1 RELEASE P1



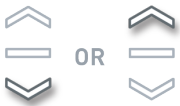
JOG X2



Motor is now in setup mode and ready for setting limits.

Check motor direction

To check travel direction of shade, press **UP** or **DOWN** on controller.



To reverse shade direction, hold both **UP** and **DOWN** until motor responds



Motor Reponse



JOG X1



Reversing motor direction using this method is only possible during initial set-up, prior to first time limit setting, or after a re-set of motor

Set limits

IMPORTANT

Damage to shade may occur when operating motor prior to setting limits. Attention should be given.

To save upper limit, hold **UP** and **STOP**.

Move shade to the desired highest or lowest position by pressing the **UP** or **DOWN** buttons on controller.




Quick Press = Step
Long Press = Continuous Travel

To save lower limit, hold **DOWN** and **STOP**.



Motor Response

Approx. 



JOG
X2

 **Initial set-up is now complete**

ADJUSTING LIMITS

Adjust upper limit

Hold **UP** and **STOP** on Controller until the motor responds.

Move shade to the desired upper position by pressing the **UP** or **DOWN** button.

To save upper limit, hold **UP** and **STOP** until the motor responds.



Motor Response

Approx.   JOG X1

Motor Response

  JOG X2

Adjust lower limit

Hold **DOWN** and **STOP** on controller.

Move shade to the desired lowest position by pressing the **UP** or **DOWN** button

To save lower limit, hold **DOWN** and **STOP**



Motor Response

Approx.   JOG X1

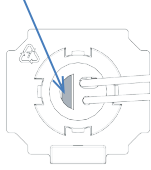
Motor Response

  JOG X2

ADDING OR REMOVING CONTROLLERS AND CHANNELS

Using motor P1 button

Hold **P1** button on motor head.



Hold **STOP** on controller to add or remove



Motor Response



Motor Response



Using a pre-existing controller

A=Existing controller or channel (to keep)

B=Controller or channel to add or remove

Press **P2** on existing controller.



Press **P2** on existing controller.



Press **P2** on new controller.



Motor Response



Motor Response



Motor Response



FAVORITE POSITIONING

Set favorite position

Move shade to the desired position by pressing the **UP** or **DOWN** button on the controller.



Press **P2** on controller.



Press **STOP** on controller.



Press **STOP** on controller.



Motor Response



Motor Response



Motor Response



Send shade to favorite position

Hold **STOP** on controller.



Delete favorite position

Press **P2** on controller.



Press **STOP** on controller.



Press **STOP** on controller.



Motor Response



Motor Response



Motor Response



ADJUSTING MOTOR SPEED

Increase or decrease motor speed

Press **P2** on controller.



Motor Response



To increase speed.



Press **DOWN**

To decrease speed.



Motor Response



Press **DOWN**

Motor Response



IMPORTANT

If motor does not react to speed adjustment, the maximum or minimum speed has already been reached.

ADDITIONAL MOTOR SETTINGS

Motor State Test

This table describes the function of a short **P1** button press/release (<2 seconds) depending on current motor configuration.

P1 Press	Condition	Function Achieved	Visual Feedback	Audible Feedback	Function Described
Short Press then Release (<2 sec)	If limit is NOT set	None	No Action	None	No Action
	If limits are set	Operational control of motor, run to limit. Stop if running	Motor runs	None	Operational control of motor after pairing and limit setting is completed first time
	If motor is in "Sleep Mode" & limits are set	Wake and control	Motor wakes and runs in a direction	None	Motor is restored from Sleep mode and RF control is active

Motor Configuration Options

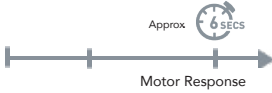
The **P1** Button is utilized to administer motor configuration as described below.

Activate Pairing Mode



↑ JOG X1 RELEASE P1

Sleep Mode



↑ JOG X1 ↑ JOG X1 RELEASE P1

Reverse Direction



↑ JOG X1 ↑ JOG X1 ↓ JOG X1 RELEASE P1

Reset To Factory Settings



↑ JOG X1 ↑ JOG X1 ↓ JOG X1 ↓ JOG X1

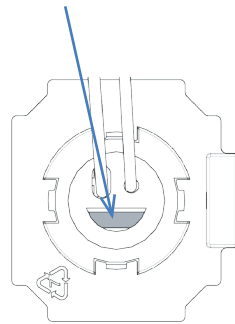


MOTOR RUNS TO LIMIT

Exit Sleep Mode

Hold P1

P1



TROUBLESHOOTING

Problem	Cause	Remedy
Motor is not responding	A / C power supply not plugged in.	Check motor to power cable connection and AC plug.
	Battery in wand are depleted	Replace 8xAA alkaline batteries.
	Power failure	Check power supply to motor is connected and active
	Transmitter battery is discharged	Replace battery
	Battery is inserted incorrectly into transmitter	Check battery polarity
	Radio interference/shielding	Ensure transmitter is positioned away from metal objects and the aerial on motor or receiver is kept straight and away from metal
	Receiver distance is too far from transmitter	Move transmitter to a closer position
Unable to adjust or set limits.	Remote is in a locked state.	Change remote status to an unlocked state
		Always reserve an individual channel for programming functions
Cannot program a single Motor (multiple motors respond)	Multiple motors are paired to the same channel.	SYSTEM BEST PRACTICE - Provide an extra 15 channel remote in your multi motor projects, that provides individual control for each motor for programming purposes
		Place all other motors into sleep mode



WARNING



Cords on window covering products present a potential strangulation hazard.



For child safety, consider cordless alternatives or products with inaccessible cords.



ADVERTENCIA



Las cuerdas y cadenas y persianas presentan un peligro de estrangulación.



Para la seguridad de los niños, considere alternativas sin cuerdas o productos con cuerdas y cadenas inaccesibles.